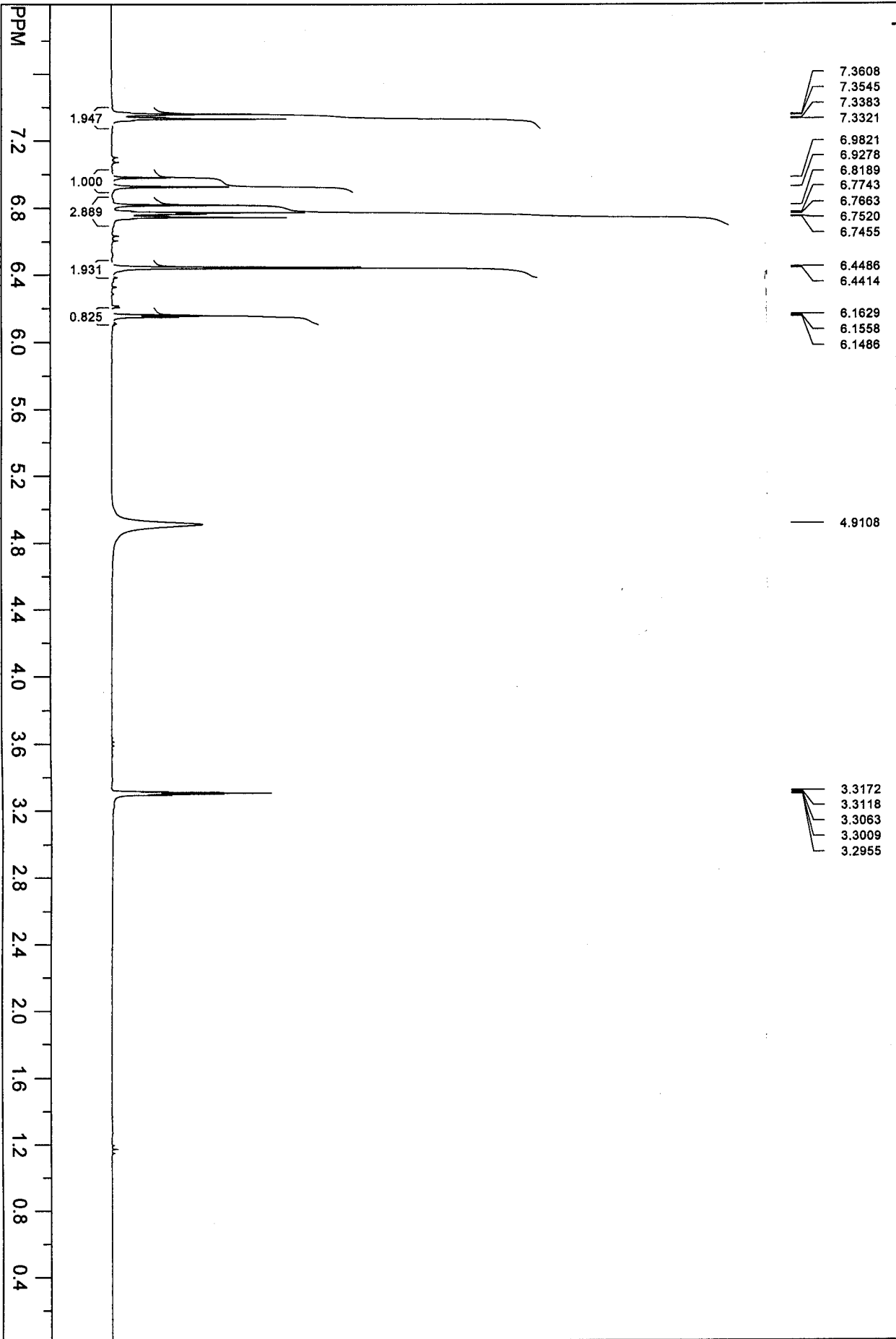


SpinWorks 2.5: LKT Labs - Resveratrol



file: C:\Documents and Settings\Admin\Desktop\Cory NMR Data\August 3rd, 2010\lkt_100803[1].lkt\1008f.req. of 0 ppm: 299.954547 MHz "s2pul"

transmitter freq.: 299.956947 MHz

time domain size: 23996 points

width: 5998.80 Hz = 19.998871 ppm = 0.249992 Hz/pt

number of scans: 16

processed size: 65536 complex points

LB: 0.100 GB: 0.0000

Hz/cm: 95.980 ppm/cm: 0.31998